



# RHINO-RACK

**CONTROLLED**

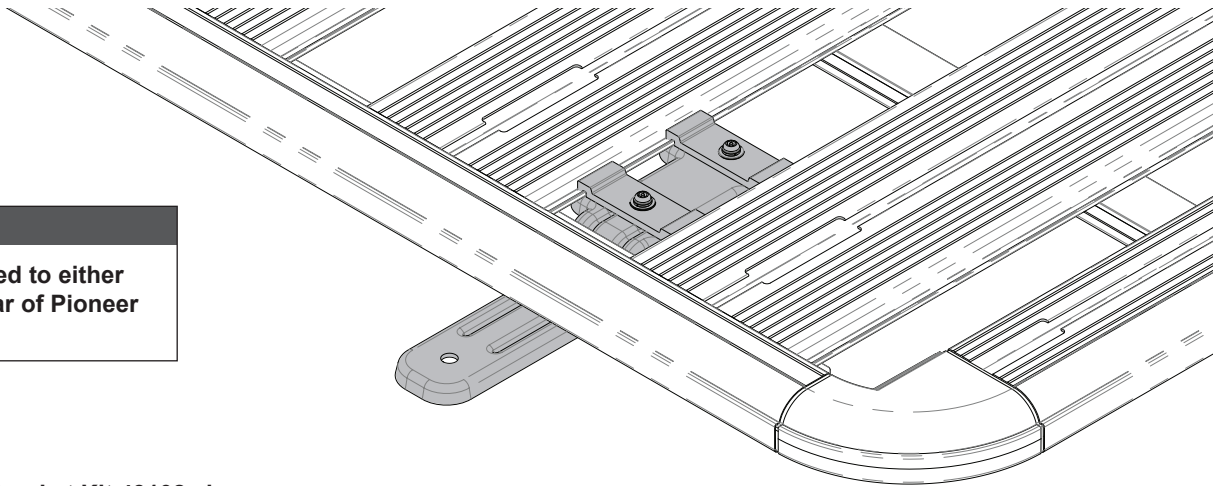
## 43102/43156 - Spotlight/LED Bracket Pioneer Tray & Platforms (1 and 2 Bracket Kits)

Place these instructions in the vehicle's glove box after installation is complete.

**Important:** Please read these instructions carefully prior to installation.  
Please refer to your fitting instruction to ensure that the alloy tray is installed correctly.  
Check the contents of this kit before commencing fitment and report any discrepancies.

**Note:**

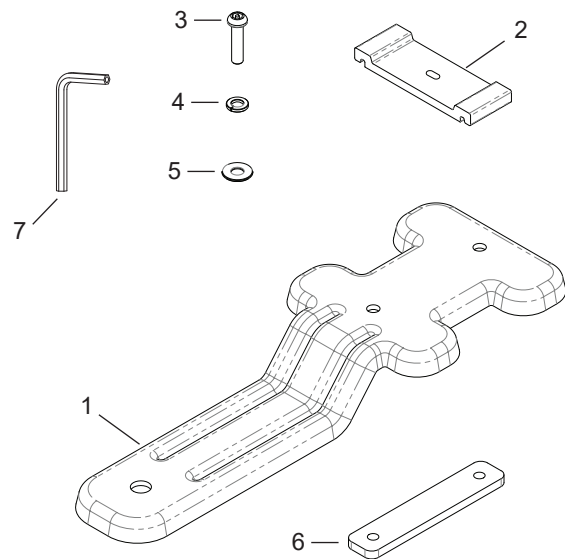
Can be fitted to either front or rear of Pioneer tray.



**Note:** Single Bracket Kit 43102 shown.

Item	Component (43102 Single Bracket Kit)	Qty	Part No.
1	Pioneer Spotlight Bracket	1	C847
2	Spotlight Bracket Tab	2	A523
3	M6 x 25mm Security Screw	2	B137
4	M6 Spring Washer	2	W004
5	M6 x OD16mm Flat Washer	2	W031
6	Plate Nut	1	C396
7	Security Allen Key 5mm	1	H021
8	Fitting Instructions	1	RS-450

Item	Component (43156 Double Bracket Kit)	Qty	Part No.
1	Pioneer Spotlight Bracket	2	C847
2	Spotlight Bracket Tab	4	A523
3	M6 x 25mm Security Screw	4	B137
4	M6 Spring Washer	4	W004
5	M6 x OD16mm Flat Washer	4	W031
6	Plate Nut	2	C396
7	Security Allen Key 5mm	1	H021
8	Fitting Instructions	1	RS-450



**Tools Required**

Allen Key (provided in kit)

**Care Instruction**

Clean Pioneer Platform or Tray prior to fitting the spotlight bracket.

**Note:**

Quantities of parts shown will differ depending on whether the 'Single' or 'Double' Bracket kit is purchased.

**Note for Dealers and Fitters:**

It is your responsibility to ensure these fitting instructions are given to the end user or client

Rhino-Rack, 22 Hanson St, Eastern Creek

NSW 2766, Australia

(02) 8846 1900

rhinorack.com.au

These instructions remain the property of Rhino-Rack Australia Pty. Ltd. and may not be used or changed for any other purpose than intended.

Document No: RS-450

Prepared By: Kayle Everett

Authorised By: Rod Renkin

Issue No: 06

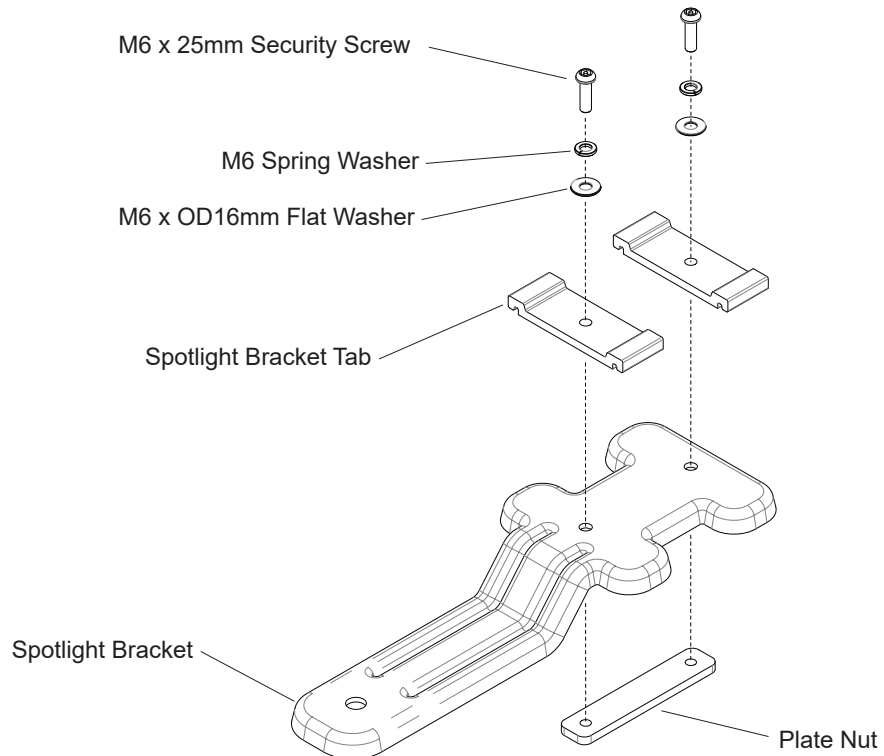
Issue Date: 14/01/2019

## 43102/43156 - Spotlight/LED Bracket Pioneer Tray & Platforms (1 and 2 Bracket Kits)

1

### Fit Hardware to Spotlight Bracket

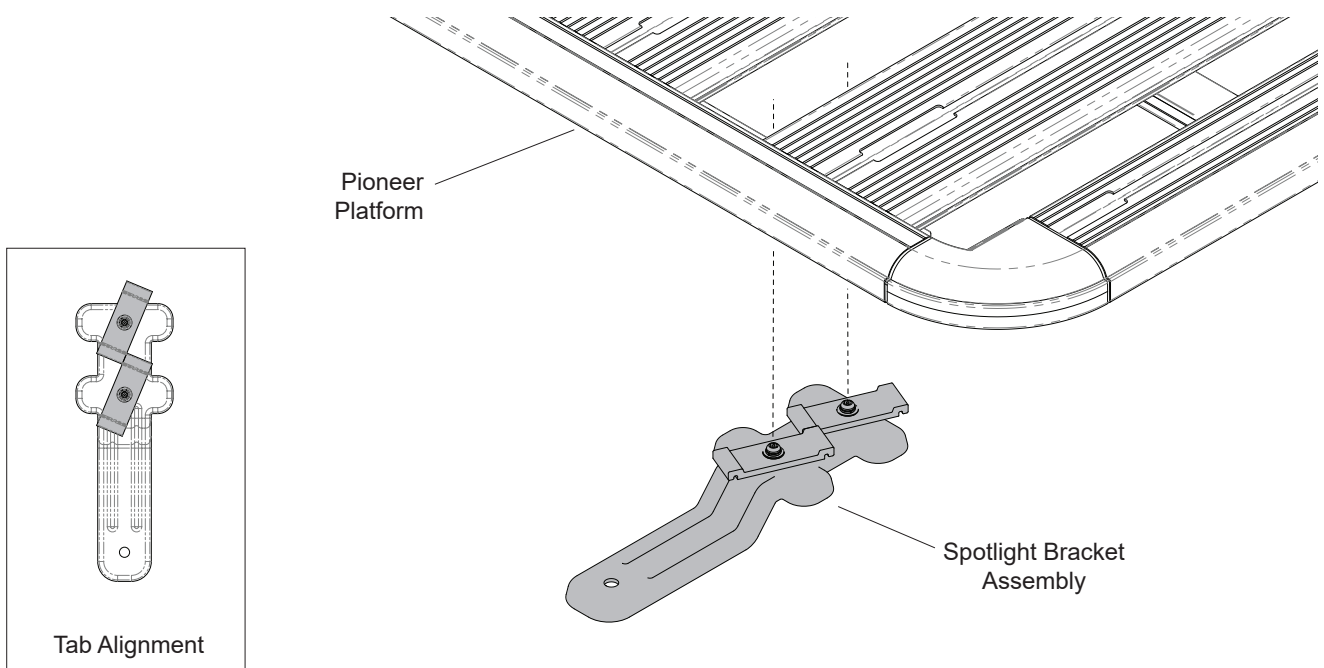
Fit the hardware shown below to the spotlight bracket with the screws left loose at this stage, engage the screws into the plate nut so that each screw does not protrude through the other side of the plate nut.



2

### Position Bracket to Under Side of Pioneer Platform

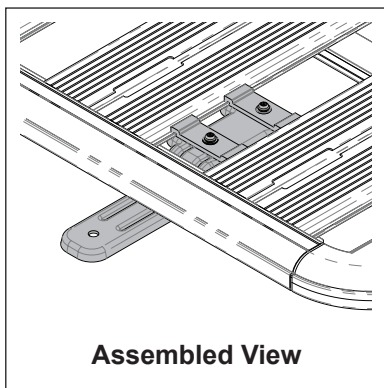
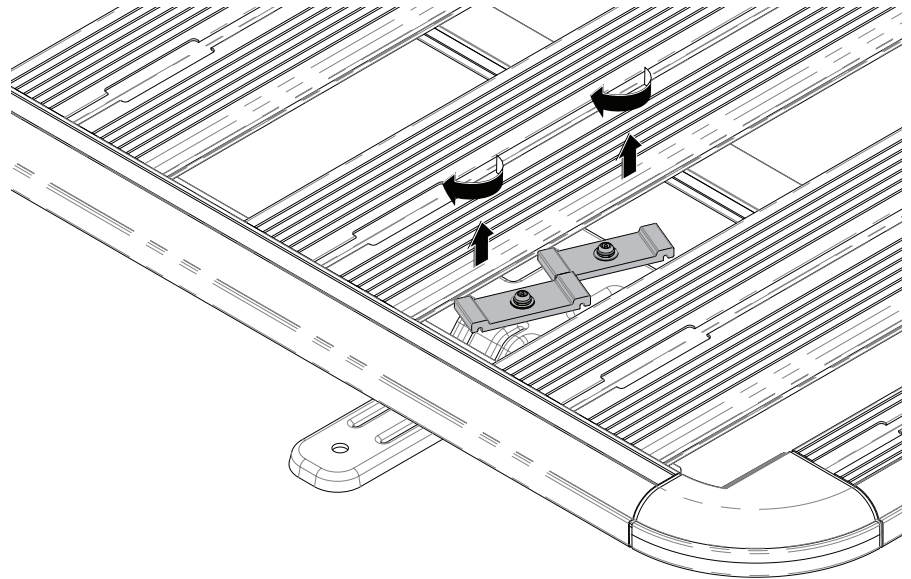
Choose the mount location at either front or rear of the Platform, the bracket can be fitted between any of the planks. Arrange the spotlight bracket tabs to sit as shown in tab alignment image below. With the tabs set as shown place the spotlight bracket on the under side of the alloy tray in the desired location.



3

### Rotate Tabs into Position

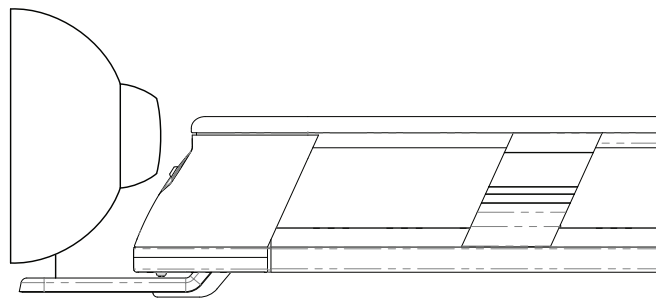
Whilst holding the spotlight bracket in position lift each of the tabs up and rotate until the tabs sit across both planks. Be careful not to scratch the planks.



4

### Position Bracket to Suit Spotlight/ LED

Slide the bracket so the tongue protrudes out the front/rear of the tray. There should be enough room so when the spotlight or LED is fitted there is adequate clearance between the tray and the body of the light (refer image below). Tighten screws with allen key provided (**Tighten to 6-8 Nm (4.43-5.9 ft/lbs)**).



Spotlight/ LED Clearance  
(full tray shown)

